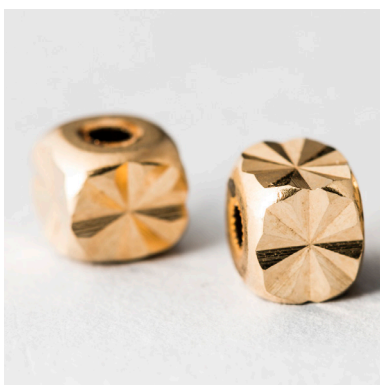
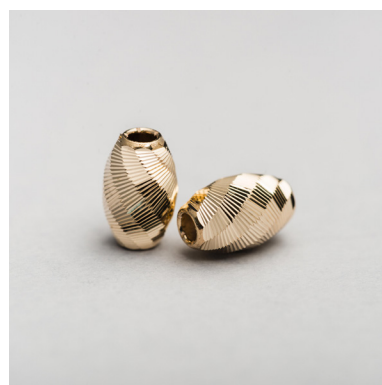
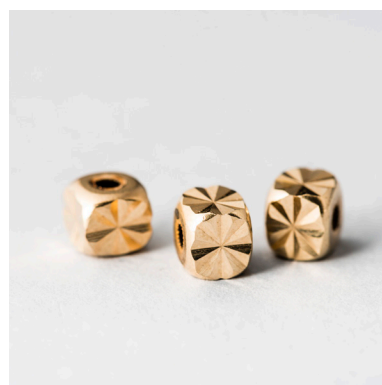
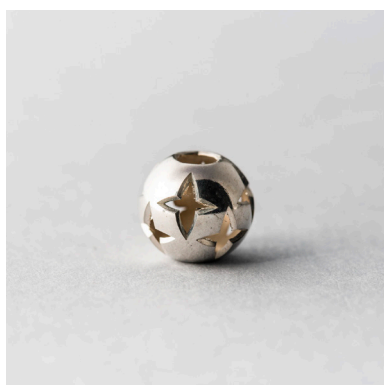


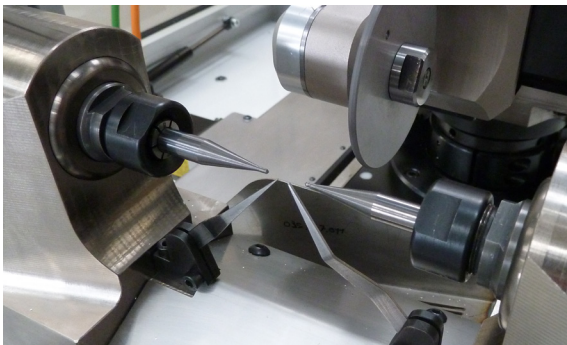
ASTRA OV



ASTRA OV



DETAIL MACHINE



DESCRIPTION

Fully automatic, multi axes CNC, diamond cutting machine, projected for lapping, faceting and decorating on oval, cylindrical or spherical beads.

The work cycle is checked and managed by the FANUC CN with touch-screen interface. Equipped with Ethernet port for remote assistance.

Visualization of the work piece by monitor camera and LCD. Machining head allows to operate both in horizontal and vertical mode and switching is automatic.

TECHNICAL FEATURES

NC	FANUC Oi-MD
Motors	brushless con encoder assoluto
Rapid traverse	30 mt/min
Cutting feed	0-20.000 mm/min
Resolution	0,001 mm
Repeatability	0,005 mm

Standard spindles

Tool changing	horizontal and vertical head
Max speed horizontal head	18.000 RPM – 360°rotation
Max speed vertical head	18.000 RPM – up&down position
Tool coupling	Disctool Ø max.100mm vertical Ø max.8mm

External dimensions

Height	1.750 mm
Footprint	1.200 x 1.500 mm
Levelling	adjustable feet
Gross weight	590 kg

Supply

Electrical supply	400V 50/60 Hz triplephase +/- 10%,Kw 2,5
Air supply	6 bar

Production info

Adjustable automatic elettropneumatic loading system for different sizes and shapes	
Beads dimensions range	Min.1mm; Max.22mm (opt. 20mm)
Max loading speed	2 sec/piece

Options

Flywheel head	36.000 RPM tool Ø min.14-max 30mm
Postprocessor for CAM	

In horizontal mode, machining head, automatically assumes various angles of work from 0° till 360°.

The work cycle is performed in closed environment, in order to allow the recovery of workmanship residues.